

# XDX FBDUR/OD10 FBDUR

Dummy modules for RFID readers for Concerto touch stations



Weather-  
proof  
IP65

Impact-  
proof  
IK05

Modular  
solution

Future-proof  
system

## Versatile dummy module

Access authorisation is an important part of many Commend solutions. For this reason, we offer dummy modules for RFID readers for the Intercom stations id5/od5 and od10 where it is possible to place third-party RFID readers behind. The design of the modules has been chosen to perfectly match the flush-mounted Concerto touch stations.

Special materials of the dummy module ensure an ideal transmission of electromagnetic signals of an RFID reader.

## Features and highlights

- Easy extension
- Simple installation (flush mounting)
- Matching Concerto product design
- Versatile solution
- Dimensioned to accommodate a wide range of readers
- Semi-transparent glass cover to display signalling LEDs
- Optimum signal strength for RFID readers, thanks to special materials

# XDX FBDUR/OD10 FBDUR

## Technical specifications

### Technical data

<b>IP rating:</b>	IP65 (acc. to EN 60529)
<b>Mechanical impact resistance:</b>	IK05 (acc. to EN 62262)
<b>Front panel:</b>	hardened glass, AG85, 3 mm (0.12 in)
<b>Dimensions (H x W x D):</b>	XDX FBDUR:
	86 x 86 x 73 mm (3.39 x 3.39 x 2.87 in)
	OD10 FBDUR:
	93 x 174 x 78 mm (3.66 x 6.85 x 3.07 in)
<b>Optional accessories:</b>	XDX FBSDUR (flush mount box for XDX FBDUR) OD10 FBSDUR (flush mount box for OD10 FBDUR)



### Extent of supply

- Dummy module (incl. mounting box)
- Short reference

### Compatible RFID readers

Manufacturer	Product	XDX FBDUR	OD10 FBDUR
TKH Security	Sirius ix30	✗	✓ <sup>1)</sup>
ELATEC GmbH	TWN4 Palon Compact Series	✓	✓
Securiton AG	Securiton Carina Series	✓ <sup>2)</sup>	✓ <sup>2)</sup>
Salto Systems, S.L.	SALTO Panel Reader	✓	✓
phg Peter Hengstler GmbH + Co. KG	PHG-Relino B Series	✓	✓ <sup>3)</sup>
phg Peter Hengstler GmbH + Co. KG	PHG-Primo A Series	✓	✓
Siemens	XMP-TMC24xx-UP Series (without PIN)	✓ <sup>4)</sup>	✓ <sup>4)</sup>
Siemens	SLIWAI Series (without PIN)	✓ <sup>2)</sup>	✓ <sup>2)</sup>
HID	iCLASS SE Reader Module	✓	✓
primion Technology GmbH	L58A-18x.01 Series	✓	✓ <sup>3)</sup>
Dorma Kaba	Erfassungseinheit 90 00	✓	✓ <sup>3)</sup>
STID	MS2 OEM Modules	✓	✓
STID	MS2S/BT OEM Modules	✓	✓
AXIS	A4010-E Reader	✗	✓
ISGUS	IT 400 SP	✓	✓ <sup>3)</sup>

<sup>1)</sup> PCB only

<sup>2)</sup> Requires disassembly and/or modification

<sup>3)</sup> Lateral installation recommended

<sup>4)</sup> Requires disassembly

# XDX FBDUR/OD10 FBDUR

## Installation instructions

### Mounting instructions

- Avoid direct sunlight.
- Install the dummy module with a distance of min. 100 mm (4 in) to walls and other objects to enable access to the locking screws (TX 08).
- Note the mounting orientation:
  - XDX FBDUR: Locking screw facing down
  - OD10 FBDUR: Locking screw facing to the right
- For brick wall mounting, the flush mount box XDX FBSDUR or OD10 FBSDUR is required (available separately).
- Do not install the dummy module on unstable walls or on surfaces which cannot support the device's weight.
- For acoustic reasons, the dummy module must be installed at a distance of min. 4 mm (0.16 in) to the Intercom station.
- Make sure the mounting box is not subject to torsional forces (e.g. on uneven walls).
- No water may penetrate into the mounting box.
- The installation of the RFID reader within or its attachment to the dummy module must be done on site.
- Before using the device, ensure all cables are connected correctly and are not damaged.
- Use moistened microfibre cloths for cleaning the dummy module.

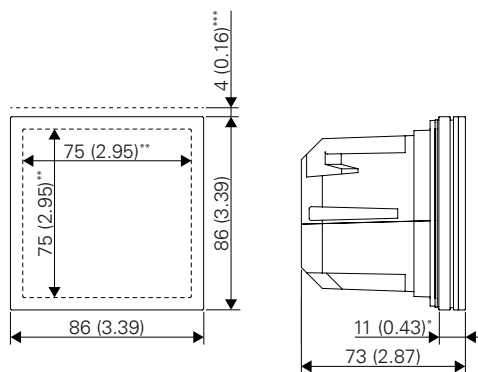
### Safety instructions

- This device shall be installed or replaced by trained and qualified personnel only.
- Observe the country-specific standards for installation, mounting and configuration.
- Only Commend accessories that comply with the technical specifications shall be used.
- Replace the dummy module if the glass on its front is damaged.

### Dimensions

#### XDX FBDUR

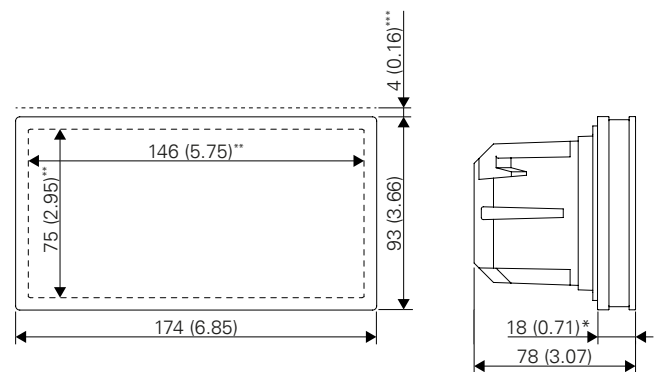
Measuring units in mm (in), not to scale!



- \* Projection on the wall
- \*\* Wall cutout
- \*\*\* Minimum mounting distance to od5 / od10

#### OD10 FBDUR

Measuring units in mm (in), not to scale!

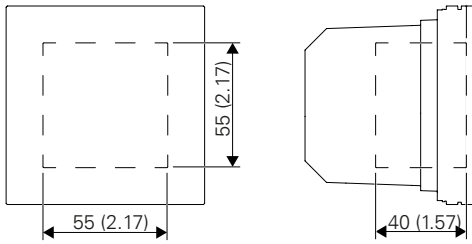


- \* Projection on the wall
- \*\* Wall cutout
- \*\*\* Minimum mounting distance to od5 / od10

## Max. dimensions for RFID readers

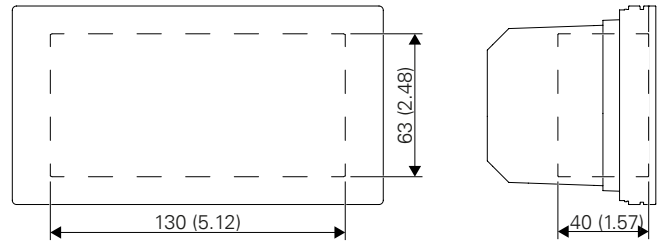
### XDX FBDUR

Measuring units in mm (in), not to scale!



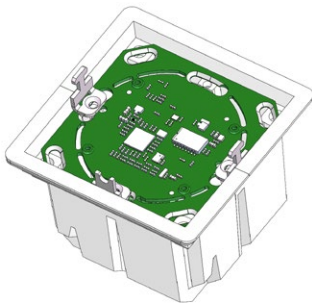
### OD10 FBDUR

Measuring units in mm (in), not to scale!

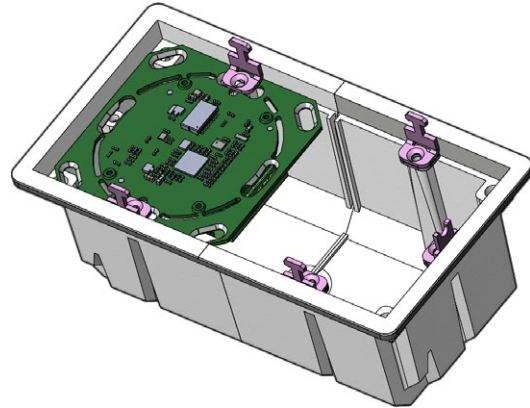


## Placement of RFID readers designed for mounting boxes

### XDX FBDUR



### OD10 FBDUR

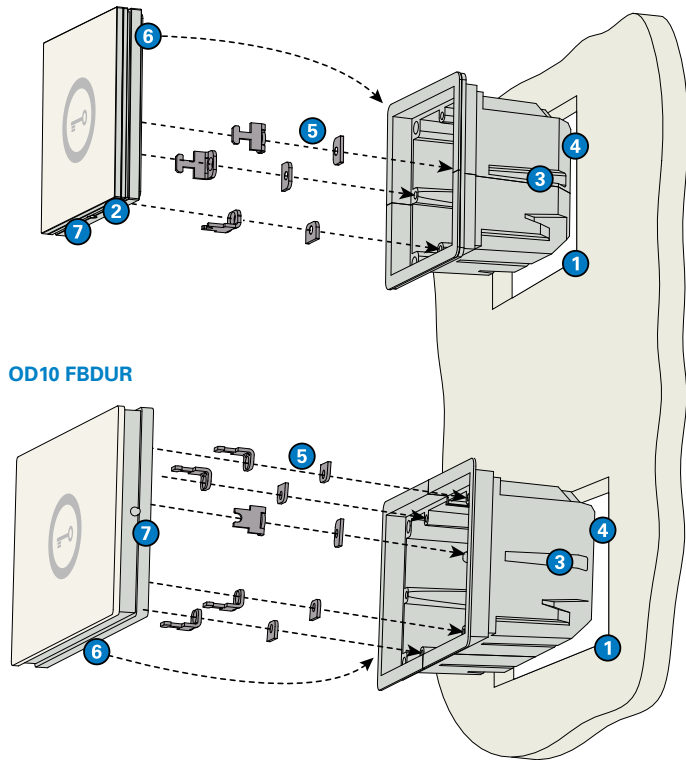


### NOTE: RFID reader dimensions

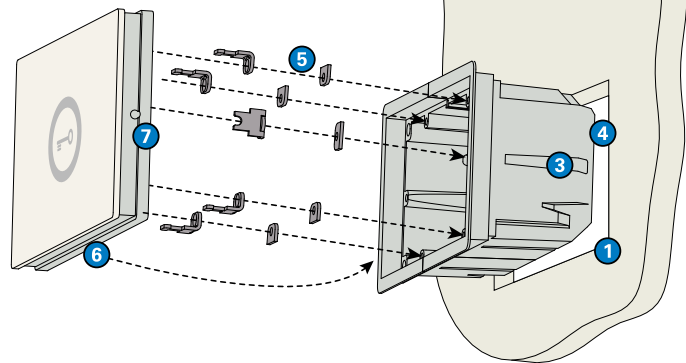
- Recommended max. dimensions for RFID readers not designed for mounting boxes:
  - XDX FBDUR (H x W x D): 55 x 55 x 40 mm (2.17 x 2.17 x 1.57 in)
  - OD10 FBDUR (H x W x D): 63 x 130 x 40 mm (2.48 x 5.12 x 1.57 in)
- Recommended dimensions for RFID readers designed for mounting boxes:
  - XDX FBDUR and OD10 FBDUR (H x W): 70 x 70 mm (2.76 x 2.76 in)
  - XDX FBDUR and OD10 FBDUR (D): 17 mm (0.67 in) towards the frame/25 mm (0.98 in) towards the mounting box
- 3D data of the dummy modules are available via cLibrary Online.

## Wall mounting

### XDX FBDUR



### OD10 FBDUR



#### NOTE

For mounting on brick walls, additionally the flush mount box XDX FBSDUR or OD10 FBSDUR is required (available separately). In this case, plaster the flush mount box into the wall and continue with ②.

- ① Cut out an opening in the wall using the supplied template as a guide.
- ② Screw in the locking screw on the XDX FBDUR clockwise as far as it will go and lift the frame off towards the locking screw.
- ③ Depending on the cable feed used, break out one of the cable glands.
- ④ Position the mounting box so that the self-locking notch points downwards for the XDX FBDUR and to the right for the OD10 FBDUR. Insert the mounting box into the wall. Press the four claw clamps on the sides of the mounting box outwards and tighten them using the screws (TX 08).
- ⑤ Attach the RFID reader to the frame or install it in the mounting box. Do not remove the fixing brackets when attaching the RFID reader to the frame. To install the RFID reader in the mounting box, remove the fixing brackets and spacer plates, insert the RFID reader and reattach the fixing brackets on the PCB in parallel with the frame. RFID readers with a PCB thickness between 1.4 mm and 1.6 mm can be installed in the mounting box.
- ⑥ Position the frame so that the locking screw points downwards for the XDX FBDUR and to the right for the OD10 FBDUR. Place the frame onto the fixing brackets.
- ⑦ Press the frame firmly against the mounting box and screw the locking screw counterclockwise as far as it will go. Ensure that the frame is locked in place.

#### NOTE

For dismantling, screw in the locking screw clockwise as far as it will go and remove the frame in the direction of the locking screw.

## Quality tested. Reliable. Smart.

COMMEND products are developed and manufactured by Commend International in Salzburg, Austria.

The development and manufacturing processes are certified in accordance with **EN ISO 9001:2015**.



The technical data contained herein has been provided solely for informational purposes and is not legally binding. Subject to change, technical or otherwise. lolP®, OpenDuplex® and Commend® are trademarks registered by Commend International GmbH. All other brands or product names are trademarks or registered trademarks of the respective owner and have not been specifically earmarked.

## A strong worldwide network

COMMEND is represented all over the world by local Commend Partners and helps to improve security and communication with tailored Intercom solutions.

[www.commend.com](http://www.commend.com)