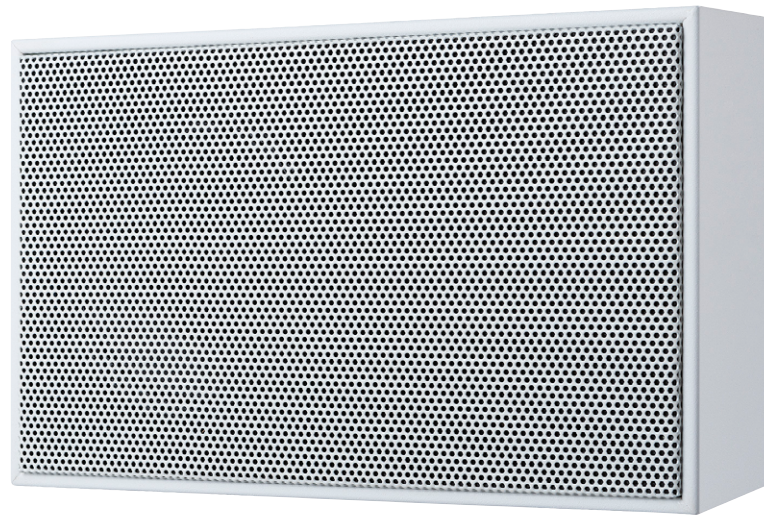


CLS 6 SCW / CLS 6 SCW70V

Surface mount loudspeaker



Easy
mounting

Flexible
to use

High
volume

Assertive in every situation

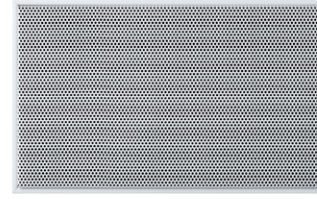
The loudspeaker CLS 6 SCW for surface mounting features a wooden housing and is suitable for speech and music signal transmission in indoor areas such as classrooms and conference rooms. Thanks to easy mounting, the wall loudspeaker can be integrated into existing environments and connected to Commend 70/100 V amplifiers with little effort. Ball-proof and anti-theft protection is ensured by the housing used.

Features and highlights

- Compact and timeless design
- Can be combined with any 70/100 V Series AF Commend amplifier

CLS 6 SCW / CLS 6 SCW70V

Technical specifications



Technical data

Housing:	wood
Sound pressure level:	93 dB (1 W/1 m)
Max. sound pressure level:	101 dB (1 m)
Loudspeaker frequency range:	80 Hz to 19 kHz (–10 dB)
Loudspeaker transmission angle:	140°
Connections:	4-pole screw down terminal
Colour:	white (RAL 9010)
Dimensions (W x H x D):	265 x 165 x 88 mm (10.43 x 6.50 x 3.46 in)
Weight incl. package:	approx. 1,650 g (3.6 lbs)

Extent of supply

- Loudspeaker
- Screws
- Wall plugs
- Aluminium mounting bracket
- Short reference

Impedances and transformer matching

Product version:	<i>CLS 6 SCW</i>	<i>CLS 6 SCW</i>	<i>CLS 6 SCW70V</i>
Operating voltage:	100 V	70 V	70 V
Load rating:	6 W	3 W	6 W
Loudspeaker impedance:	1.6 kΩ/3.3 kΩ/ 6.6 kΩ	1.6 kΩ/3.3 kΩ/ 6.6 kΩ	816 Ω/1.6 kΩ/ 3.2 kΩ
Transformer matching (yellow/red/black):	6 W/3 W/1.5 W	3 W/1.5 W/0.75 W	6 W/3 W/1.5 W

CLS 6 SCW / CLS 6 SCW70V

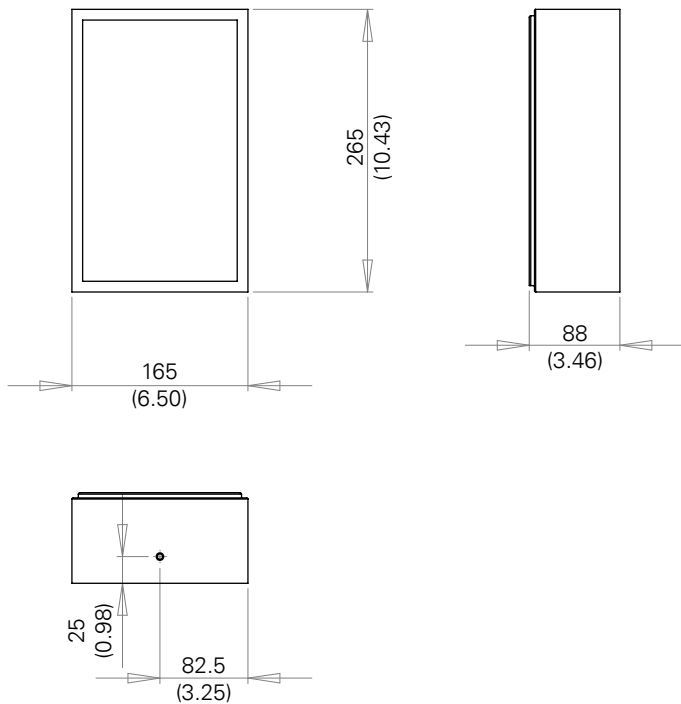
Installation instructions

Mounting instructions

- Do not install the device on unstable walls or on surfaces which cannot support the device's weight.
- When using dowels, make sure to clean the wall holes properly after drilling.
- This device shall be installed or replaced by trained and qualified personnel only, and only when the power supply is disconnected.
- Observe the country-specific standards for installation, mounting and configuration.
- Install or store this device out of the reach of children and do not allow persons unfamiliar with the device and these instructions to handle and operate the device.
- All connected circuits shall fulfil the requirements for ES1 circuits (cf. SELV acc. IEC/EN 60950-1) and PS2 (Limited Power Source) as per IEC/EN 62368-1.

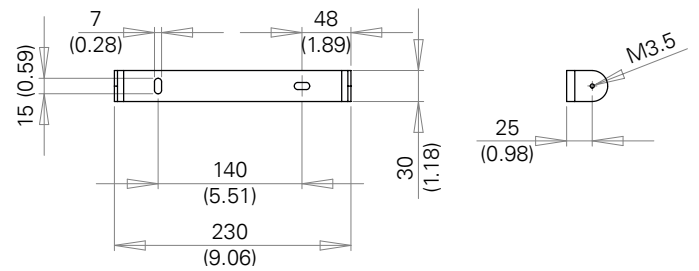
Dimensions

Measuring units in mm (in), not to scale!



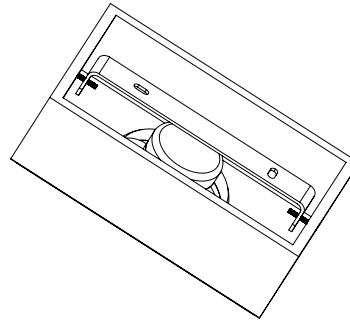
Mounting bracket

Measuring units in mm (in), not to scale!



Note:

The required tightening torque for the two adjusting screws is 0.3 Nm.



Quality tested. Reliable. Smart.

COMMEND products are developed and manufactured by Commend International in Salzburg, Austria.

The development and manufacturing processes are certified in accordance with **EN ISO 9001:2015**.



The technical data contained herein has been provided solely for informational purposes and is not legally binding. Subject to change, technical or otherwise. lolP®, OpenDuplex® and Commend® are trademarks registered by Commend International GmbH. All other brands or product names are trademarks or registered trademarks of the respective owner and have not been specifically earmarked.

A strong worldwide network

COMMEND is represented all over the world by local Commend Partners and helps to improve security and communication with tailored Intercom solutions.

www.commend.com